

Ich han en Mötz, ich ben jetz Präsident

(Marschlied)

Musik und Text: Dieter Steudter, Frank Morawa

Bearbeitung: Hermann Bayer

Marschtempo

Musical score for the first system of instruments. It includes staves for Piccoloflöte 1 (C), Piccoloflöte 2 (C), Böhmflöte 1 (C), Böhmflöte 2 (C), Lyra/Glockenspiel (C), Marimbaphon (C), and Schlagwerk. The music is in common time (C) and features a strong, rhythmic melody with dynamic markings such as *f*.

Musical score for the second system of instruments, starting with a rehearsal mark '3'. It includes staves for Pic 1, Pic 2, Bf 1, Bf 2, L/Gl, Ma, and Schl. The music continues the rhythmic theme from the first system.

(c) 2011 Verlag Dabbelju, Laola

Abdruck mit freundlicher Genehmigung:

Hermann Bayer, Geschwister-Scholl-Str. 39, 52428 Jülich - Stetternich

Jede Aufführung bitte bei der GEMA melden! GEMA-Nr. 12293977

6

Pic 1
Pic 2
Bf 1
Bf 2
L/Gl
Ma
Schl.

Detailed description: This system contains measures 6, 7, and 8. The Piccolo 1 and 2 parts play a rhythmic pattern of quarter notes. The Bassoon 1 and 2 parts play a similar pattern with some rests. The Clarinet in B-flat and Alto Saxophone parts play a melodic line. The Bassoon part has a long note in measure 7. The Clarinet in B-flat and Alto Saxophone parts have a melodic line. The Bassoon part has a long note in measure 7. The Clarinet in B-flat and Alto Saxophone parts have a melodic line. The Bassoon part has a long note in measure 7.

9

Pic 1
Pic 2
Bf 1
Bf 2
L/Gl
Ma
Schl.

mf

Detailed description: This system contains measures 9, 10, and 11. The Piccolo 1 and 2 parts play a rhythmic pattern. The Bassoon 1 and 2 parts play a similar pattern. The Clarinet in B-flat and Alto Saxophone parts play a melodic line. The Bassoon part has a long note in measure 10. The Clarinet in B-flat and Alto Saxophone parts have a melodic line. The Bassoon part has a long note in measure 10. The Clarinet in B-flat and Alto Saxophone parts have a melodic line. The Bassoon part has a long note in measure 10.

12

Pic 1
Pic 2
Bf 1
Bf 2
L/Gl
Ma
Schl.

Detailed description: This system contains measures 12, 13, and 14. The Piccolo 1 and 2 parts play a rhythmic pattern. The Bassoon 1 and 2 parts play a similar pattern. The Clarinet in B-flat and Alto Saxophone parts play a melodic line. The Bassoon part has a long note in measure 13. The Clarinet in B-flat and Alto Saxophone parts have a melodic line. The Bassoon part has a long note in measure 13. The Clarinet in B-flat and Alto Saxophone parts have a melodic line. The Bassoon part has a long note in measure 13.

15

Pic 1
Pic 2
Bf 1
Bf 2
L/Gl
Ma
Schl.

Detailed description: This system contains measures 15, 16, and 17. It features seven staves: Pic 1, Pic 2, Bf 1, Bf 2, L/Gl, Ma, and Schl. The music is in 3/4 time. Pic 1 and Pic 2 play a rhythmic pattern of eighth notes. Bf 1 and Bf 2 play sustained notes with some movement. L/Gl plays a steady eighth-note accompaniment. Ma plays a bass line with eighth notes. Schl. provides a harmonic accompaniment with chords and eighth notes.

18

Pic 1
Pic 2
Bf 1
Bf 2
L/Gl
Ma
Schl.

Detailed description: This system contains measures 18, 19, and 20. It features the same seven staves as the previous system. Measure 18 starts with a key signature change to one sharp (F#). Measures 19 and 20 are marked with a forte (*f*) dynamic. Pic 1 and Pic 2 play a more active melodic line. Bf 1 and Bf 2 play a rhythmic accompaniment. L/Gl continues with eighth notes. Ma plays a bass line. Schl. provides a harmonic accompaniment with chords and eighth notes.

21

Pic 1
Pic 2
Bf 1
Bf 2
L/Gl
Ma
Schl.

Detailed description: This system contains measures 21, 22, and 23. It features the same seven staves. The music continues with the same instrumentation and dynamics. Pic 1 and Pic 2 play a rhythmic pattern. Bf 1 and Bf 2 play sustained notes. L/Gl plays eighth notes. Ma plays a bass line. Schl. provides a harmonic accompaniment with chords and eighth notes.

Ich han en Mötz, ich ben jetz Präsident

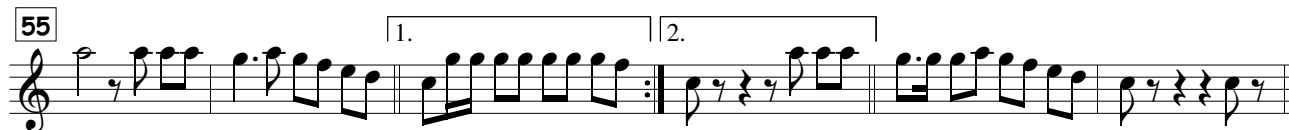
(Marschlied)

Musik und Text: Dieter Steudter, Frank Morawa

Bearbeitung: Hermann Bayer

Marschtempo

Piccoloflöte 1 (C)



(c) 2011 Verlag Dabbelju, Laola

Abdruck mit freundlicher Genehmigung:

Hermann Bayer, Geschwister-Scholl-Str. 39, 52428 Jülich - Stettelnich

Jede Aufführung bitte bei der GEMA melden! GEMA-Nr. 12293977

Ich han en Mötz, ich ben jetz Präsident

(Marschlied)

Musik und Text: Dieter Steudter, Frank Morawa

Bearbeitung: Hermann Bayer

Marschtempo

Sopranflöte 1 (Ces)
 Sopranflöte (Ces)
 Altflöte (Fes)
 Tenorflöte (Ces)
 Lyra/Glockenspiel (C)
 Marimbaphon (C)
 Schlagwerk

3

S 1
 S 2
 A
 T
 L/Gl
 Ma
 Schl.

(c) 2011 Verlag Dabbelju, Laola

Abdruck mit freundlicher Genehmigung:

Hermann Bayer, Geschwister-Scholl-Str. 39, 52428 Jülich - Stetternich

Jede Aufführung bitte bei der GEMA melden! GEMA-Nr. 12293977

6

S 1
S 2
A
T
L/Gl
Ma
Schl.

Detailed description: This system contains measures 6, 7, and 8. The vocal parts (S 1, S 2, A, T) are in the key of C major. S 1 and S 2 have a melodic line with eighth notes. A and T have a more complex line with some rests and a long note in measure 7. The piano accompaniment (L/Gl, Ma, Schl.) is in the key of F major. The bass line (Schl.) features a rhythmic pattern of eighth notes.

9

S 1
S 2
A
T
L/Gl
Ma
Schl.

mf

Detailed description: This system contains measures 9, 10, and 11. The vocal parts continue their melodic lines. The piano accompaniment maintains its rhythmic pattern. A dynamic marking of *mf* (mezzo-forte) is present in measures 10 and 11 across several parts.

12

S 1
S 2
A
T
L/Gl
Ma
Schl.

Detailed description: This system contains measures 12, 13, and 14. The vocal parts have a more active melodic line. The piano accompaniment continues with its characteristic rhythmic accompaniment.

15

S 1
S 2
A
T
L/Gl
Ma
Schl.

Detailed description: This system contains measures 15, 16, and 17. The vocal parts (S 1, S 2, A, T) are in treble clef with a key signature of one sharp (F#). The piano accompaniment (L/Gl, Ma, Schl.) is in bass clef with a key signature of three flats (Bb, Eb, Ab). The piano part features a steady eighth-note accompaniment in the right hand and a more complex bass line in the left hand. The vocal lines consist of eighth and sixteenth notes.

18

S 1
S 2
A
T
L/Gl
Ma
Schl.

Detailed description: This system contains measures 18, 19, and 20. A dynamic marking of *f* (forte) is present at the beginning of measure 18. The piano accompaniment continues with its eighth-note accompaniment. The vocal parts have some rests in measure 18, followed by active lines in measures 19 and 20. A double bar line is present at the end of measure 20.

21

S 1
S 2
A
T
L/Gl
Ma
Schl.

Detailed description: This system contains measures 21, 22, and 23. The piano accompaniment continues with its eighth-note accompaniment. The vocal parts have some rests in measure 21, followed by active lines in measures 22 and 23. A double bar line is present at the end of measure 23.

